

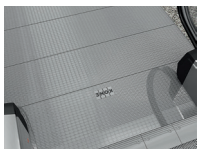
ESCALATOR ACCESSORIES

FOR KONE TRANSITMASTER 180

Access Cover

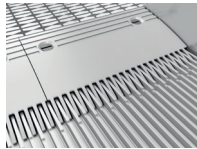


Natural ribbed aluminum

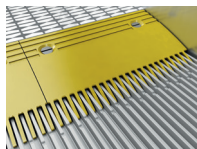


Stainless steel surface with punched diamond pattern (available in 304#)

Comb



Aluminum comb segments

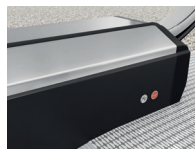


Aluminum comb segments with yellow coating

Skirt

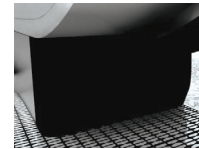


Brushed satin stainless steel skirt with clear anti-friction coating

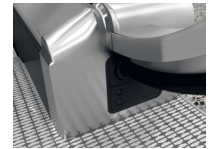


Sheet steel skirt with black anti-friction coating

Frontplate



Black plastic



Stainless steel



Black plastic flat frontplate for solid inclined balustrade

Handrail



Black



Black with white demarcation inserts

Balustrade

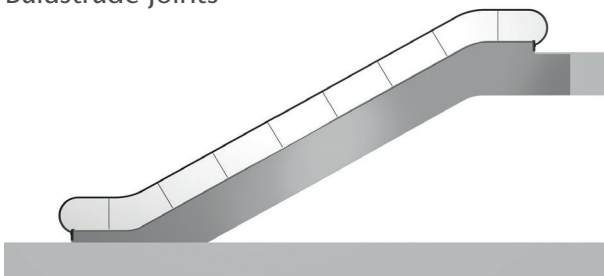


Clear glass balustrade panels

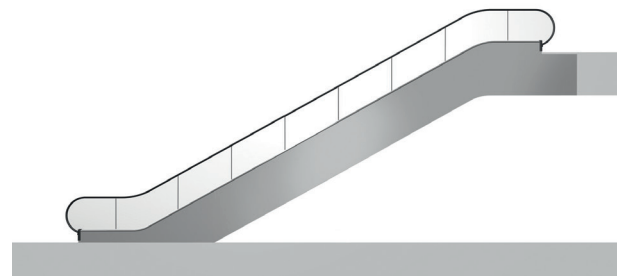


Brushed stainless steel solid inclined balustrade

Balustrade Joints

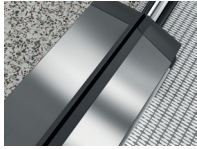


As standard, joints between glass balustrade panels are arranged perpendicular to the truss. Inclined panels are 48 in. (1200 mm) wide except for one make-up panel at the upper end which is used to compensate for the vertical rise.

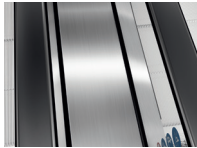


As an option, the inclined panel widths can be equalized with joints arranged perpendicular to the floor or truss.

Decking



Brushed satin stainless steel



Center decking

Step Color



Silver aluminum



Black color aluminum with metal color ribs

Horizontal Steps



2 horizontal steps



3 horizontal steps



4 horizontal steps

Step Demarcation



Yellow painted (RAL1004)

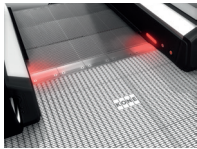


Yellow plastic insert Step sides and rear (RAL1023)

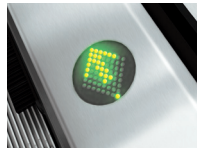


Plastic on sides and rear, and painted step nose

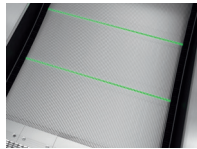
Lighting



LED comb lighting



LED traffic lights located in the decking



Under-step demarcation lighting



Traffic lights for solid balustrade

Additional Option



Diagnostic display