

# CONFIGURATIONS & DIMENSIONS

Max Travel<sup>(8)</sup>: 48 ft.

Max Landings: 4

Speed:

150 fpm (.75 m/s)

Car Height [F]:

7 ft. 6 in. [2286 mm]

Entrance Height [G]:

7 ft. [2134 mm]

Visit [kone.us](http://kone.us) for the latest project-specific details, BIM, CAD drawings, CSI specifications, electrical data, reaction loads and building access requirements.

			[A]	[A] SEISMIC	[B]	[B] SEISMIC	[C]	[D]	[E]	
	CAPACITY LBS. (kg)	OPENING TYPE <sup>(6)</sup>	HOISTWAY WIDTH (mm)	HOISTWAY WIDTH (mm)	HOISTWAY DEPTH (mm)	HOISTWAY DEPTH (mm)	INTERIOR WIDTH (mm)	INTERIOR DEPTH (mm)	DOOR WIDTH (mm)	STRETCHER ACCOMMODATION <sup>(9)</sup>
FRONT OPENING PASSENGER	2000 (907)	Side Opening	7'-4" (2235)	7'-9" (2362)	5'-9" (1753)	5'-9 1/2" (1766)	5'-8 7/8" (1750)	4'-4 7/16" (1332)	3'-0" (914)	NO
	2500 (1134)	Side Opening or Center Opening	8'-4" (2540)	8'-9" (2667)	5'-9" (1753)	5'-9 1/2" (1766)	6'-8 7/8" (2055)	4'-4 7/16" (1332)	3'-6" (1067)	NO
	3000 (1361)	Side Opening or Center Opening	8'-4" (2540)	8'-7" (2616)	6'-3" (1905)	6'-3 1/2" (1918)	6'-5 5/8" (1971)	5'-0 7/16" (1536)	3'-6" (1067)	NO
	3500 (1588)	Side Opening or Center Opening	8'-4" (2540)	8'-7" (2616)	6'-11" (2108)	6'-11" (2108)	6'-5 5/8" (1971)	5'-6 5/8" (1693)	3'-6" (1067)	YES <sup>(9)</sup>
FRONT & REVERSE OPENING PASSENGER	2000 (907)	Side Opening	7'-4" (2235)	7'-9" (2362)	6'-3 3/4" (1924)	6'-3 3/4" (1924)	5'-8 7/8" (1750)	4'-4 7/16" (1332)	3'-0" (914)	NO
	2500 (1134)	Side Opening or Center Opening	8'-4" (2540)	8'-9" (2667)	6'-3 3/4" (1924)	6'-3 3/4" (1924)	6'-8 7/8" (2055)	4'-4 7/16" (1332)	3'-6" (1067)	NO
	3000 (1361)	Side Opening or Center Opening	8'-4" (2540)	8'-7" (2616)	6'-11 3/4" (2127)	6'-11 3/4" (2127)	6'-5 5/8" (1971)	5'-0 7/16" (1536)	3'-6" (1067)	NO
	3500 (1588)	Side Opening or Center Opening	8'-4" (2540)	8'-7" (2616)	7'-6" (2286)	7'-6" (2284)	6'-5 5/8" (1971)	5'-6 5/8" (1693)	3'-6" (1067)	NO

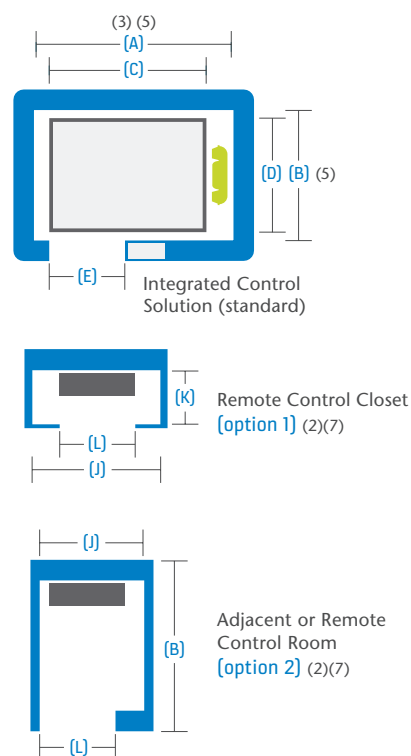
CLEAR OVERHEAD [H] AND PIT DEPTH [I]	150 FPM (.75 m/s)	
CAPACITY LBS. (kg)	Pit Depth (mm)	Clear Overhead (mm)
2000 to 3500 (907 to 1588)	5'-0" (1524)	11'-8" (3556) <sup>(1)</sup>

CONTROL SPACE	[J]	[K]	[L]	
CAPACITY LBS. (kg)	CONTROLLER SPACE	WIDTH (mm)	DEPTH (mm)	DOOR WIDTH (mm)
2000 to 3500 (907 to 1588)	Remote Closet	4'-1" (1245)	1'-8" (508)	3'-6" (1067)
2000 to 3500 (907 to 1588)	Adjacent or Remote Room	5'-0" (1524)	Dimension [B]	3'-0" (914)

## Notes

- (1) An 8" inch tall hoist beam is required for installation (by others). Dimension [H] reflects 11'-8" clearance under hoist beam. This clearance is available with a moveable hoist beam.
- (2) If an EBD (Emergency Battery Device) is required please contact your KONE Sales Professional for further detail regarding dimensions, [J] and [L].
- (3) The published hoistway [A] dimensions represent the minimum clear inside requirements. Construction efficiencies can be realized by increasing these dimensions by up to 2" (51 mm).
- (4) For pit depths less than 5' (1524 mm) please contact a KONE Sales Professional.
- (5) The published interior width [C] and depth [D] dimensions represent the minimum clear inside requirements without raised panels. For interior width [C] and Depth [D] dimensions with raised panels please contact a KONE sales Professional.
- (6) A pit ladder wall pocket may be required. Please contact a KONE sales Professional.
- (7) Contact your local KONE Sales Professional regarding local code variations when utilizing the integrated remote closet options.
- (8) If IBC (International Building Code) 2018 or ASME A17.1-2019/CSA B44-19 code is applicable, contact your local sales professional for controller space configurations.
- (9) Stretcher accessibility based only for side opening type and International / California Building Code specified 24 inch by 84 inch stretcher with 5 inch degree radius corners. Customers in Canada, please review stretcher compliance with your local sales representatives.
- (10) All KONE MonoSpace 300 DX elevators utilize a single speed door.

## Plan Views



## Section View

