

The background of the advertisement is a photograph of a modern building's interior. It features a wide, multi-level atrium with a high ceiling. A prominent feature is a large, colorful, geometric chandelier hanging from the ceiling. To the right, there are several large, cylindrical columns with a textured, metallic finish. In the foreground, a set of escalators with glass railings leads up towards the center of the atrium. The overall atmosphere is bright and architectural.

IS IT NEW OR IS IT ECOMOD? (IT'S BOTH.)

CHOOSE THE PROVEN STANDARD IN ESCALATOR MODERNIZATION AND GET MORE.

WITH NEARLY TWO DECADES OF EXPERIENCE, KONE KNOWS ESCALATOR MODERNIZATION



Are age-related escalator issues causing increased downtime, safety concerns, or rider complaints? Modernize with KONE EcoMod, the award-winning solution that's built stronger to last longer. KONE EcoMod is designed to be used in more trusses than any competitor – and has been deployed in more successful installations than all major competitors combined. KONE offers the best value, because KONE EcoMod gives you more:

KONE GIVES YOU MORE	WHY IT MATTERS
More durable materials, built to higher standards	Increases escalator reliability
More safety	Exceeds requirements, decreases maintenance
More attention to detail, such as stainless steel front plates	Improves aesthetics
More experienced KONE EcoMod installation crews and project managers	Creates turn-key solution
More cost-effective, modular installation	Reduces time, disruption over full replacement
More innovation, like standby mode and KONE 24/7 Connected Services	Delivers energy savings, reduces downtime
More standard features than any other competitor	Makes KONE EcoMod the best choice in modernization

Contact your KONE EcoMod representative for more information on this innovative solution. We have the experience to create a plan that's right for your organization.



THE MOST AWARDED COMPANY

KONE HAS RECEIVED MORE AWARDS IN MORE CATEGORIES THAN ANY OTHER ELEVATOR/ESCALATOR COMPANY.

Named by *Forbes* as one of the most innovative companies in the world 2010-2016, 2018

Red Dot Award: Product Design 2012, 2014, 2015

Innovation Award for KONE UltraRope from *Council on Tall Buildings and Urban Habitat* 2013

2013 GOOD DESIGN Awards: Design Offering, Functional Elevator Signalization, Car Design 2013

Ranked in *Newsweek's* list of world's greenest companies 2014

Received *iF* Product Design Awards 2014, 2015

Consistently received *Elevator World's* "Project of the Year" award 2005-2009, 2011-2022

Recognized by *Carbon Disclosure Project* as a top climate change performer, with an A- score 2017, 2018

Ranked among the world's most sustainable companies by *Corporate Knight* 2017, 2018

Named by *Forbes* as one of the best employers in the world 2017, 2018

Received Certificate of Conformance from *BACnet* 2018

KONE provides innovative and eco-efficient solutions for elevators, escalators and the systems that integrate them with today's intelligent buildings.

We support our customers every step of the way: from design, manufacturing and installation to maintenance and modernization. KONE is a global leader in helping our customers manage the smooth flow of people and goods throughout their buildings.

Our commitment to customers is present in all KONE solutions. This makes us a reliable partner throughout the life cycle of the building. We challenge the conventional wisdom of the industry. We are fast, flexible, and we have a well-deserved reputation as a technology leader, with such innovations as KONE MonoSpace®, KONE EcoMod®, and KONE UltraRope®.

KONE employs over 55,000 dedicated professionals to serve you globally and locally.

KONE

kone.us



KONE

KONE EcoMod COMPONENTS

MORE DURABLE, INNOVATIVE COMPONENTS – KONE ECOMOD, BETTER THAN NEW

KONE EcoMod®

ENGINEERED TO GIVE YOU MORE FROM THE INSIDE OUT

KONE offers the best value, because KONE EcoMod gives you more every step of the way. As the industry leader in innovation, we have developed many important advancements. Every component has been thoughtfully designed and selected, including many APTA-compliant features, to provide greater durability and reliability, and to exceed safety code requirements.

<p>GEARED DIRECT DRIVE SYSTEM</p> <p>K ✓ ♻️</p>	<ul style="list-style-type: none"> ▪ Eliminates main drive and handrail drive chains, the primary source of breakdowns, reducing maintenance downtime and costs ▪ Achieves 96% efficiency (vs 85% in competitors' drives) ▪ Location inside step band maximizes space for flat steps, a best practice in safety ▪ Increases passenger safety by synchronizing handrail and step movement ▪ Uses synthetic oil, for fewer oil changes, reduced downtime
<p>LUBE-FREE STEP CHAIN</p> <p>✓ ♻️</p>	<ul style="list-style-type: none"> ▪ Works in tandem with Geared Direct Drive to help reduce oil consumption by 97% ▪ Significantly reduces clean-down time and costs
<p>FREE-FLOATING STEP GUIDANCE SYSTEM</p> <p>K ✓</p>	<ul style="list-style-type: none"> ▪ Unique, positive-type system is designed to maintain tight tolerances throughout escalator's incline ▪ Individually-controlled steps aligned with a more rigid skirt help prevent entrapment, improve passenger safety
<p>PERMANENT MAGNET CERAMIC BRAKE</p> <p>K ✓</p>	<ul style="list-style-type: none"> ▪ Offers smoother, safer, more controlled emergency braking
<p>STAINLESS STEEL FRONT PLATE</p> <p>✓</p>	<ul style="list-style-type: none"> ▪ Provides longer life, higher aesthetic value vs plastic
<p>V-GROOVE HANDRAIL</p> <p>✓ A</p>	<ul style="list-style-type: none"> ▪ Offers superior traction for higher-usage environments ▪ More robust design increases handrail life cycle

APTA-Compliant Components ✓ **A**

APTA, the American Public Transportation Association, sets compliance standards for safe, efficient, economical transit-grade escalators.

These and other heavier-gauge, APTA-compliant components are standard. Robust component design may also make higher step loads possible.

- THICKER 1/2" GLASS BALUSTRADE
- THICKER 11 GAUGE SKIRTS
- THICKER 14 GAUGE DECK PANELS
- THICKER 3 MM STEP TRACK

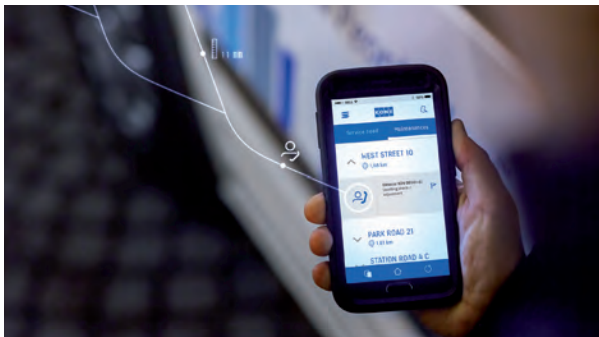
KEY: Exclusive **K** for KONE / APTA **A**
Standard Equipment ✓ / EcoFriendly ♻️

Contact your KONE EcoMod representative to learn how KONE's standard components deliver more value than any of our competitors.

KONE EcoMod[®] OPTIONS

CUSTOMIZE YOUR KONE ECOMOD ESCALATOR WITH A WIDE RANGE OF OPTIONS AND ACCESSORIES

Complement your building's aesthetics, add optional features to further enhance functionality, or add a service package to our pre-installed KONE 24/7 Connected Services. All accessories are designed specifically for KONE EcoMod, and many features are constructed to meet heavy-duty APTA* standards.



KONE 24/7 CONNECTED SERVICES CAPABILITY

State-of-the-art diagnostic technology and round-the-clock monitoring predict problems before they happen. Ask your KONE representative for more information or about subscription pricing options to enable this built-in feature.



STAND-BY OPERATION^Δ

- Smaller standby inverter than competitor models occupies less space
 - Exceeds IECC standards
 - Regenerative design allows energy to be returned to the building's power grid
 - Yields 20-40% energy savings*
- Ask your KONE representative if this feature is appropriate for your application

LED LIGHTING OPTIONS^Δ

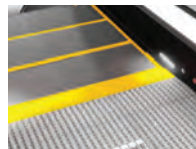
Take a brighter approach to safety and good looks with energy-efficient LED lighting options for combs and skirts, along with other special LED features, each at additional cost.

Wifi-Controlled LED Lighting



Multicolor, wifi-controlled under handrail lighting

LED Comb Light



Designed to draw attention to combs

LED Skirt Spot Lighting



Additional lighting increases rider safety

LED Traffic Sign



Visually displays current escalator direction

Diagnostic Display



Convenience feature for maintenance personnel

*Savings vary from job to job.

CHOOSE YOUR OPTIONS FOR THESE FEATURES, ALL STANDARD WITH KONE ECOMOD

THICKER, STRONGER, BUILT TO LAST LONGER



Brushed satin
14-gauge stainless
steel decking



Thicker 11-gauge skirt
more rigid to minimize
deflection



V-groove handrail
offers superior traction,
increased life cycle



Stainless steel front plates
provide longer life, higher
aesthetic value vs plastic

→ Our standard 1/2" glass balustrade is 33% thicker than competitor models**

Many features are constructed to meet heavy-duty APTA* standards

**See options below

MORE AESTHETIC CHOICES

Skirt



Brushed satin stainless
steel skirt with clear
anti-friction coating

Step Colors



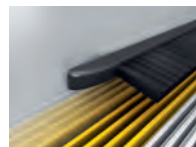
Silver-color aluminum

Balustrade



Clear 1/2" glass
balustrade panels

Skirt Brush Holder



Black-coated anodized
aluminum



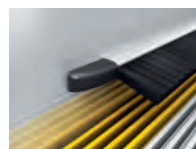
Sheet steel skirt with
black antifriction
coating



Black-color aluminum
with silver-color ribs



Stainless steel
panels



Clear-coated anodized
aluminum

GET MORE SAFETY WITH KONE ECOMOD

Attention to safety,
quality, detail, all
included.

Skirt Brush[Ⓢ]



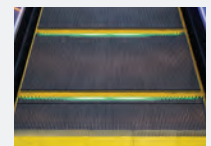
Provides an extra measure
of safety beyond code
requirements

Step Demarcation[Ⓢ]



Yellow plastic insert is
more durable, more
easily redone than paint

Demarcation Lighting[Ⓢ]



Highlights steps for
safer, easier transport

*APTA, the American Public Transportation Association, sets compliance standards for safe, efficient, economical transit-grade escalators. Incorporating APTA-compliant components into KONE EcoMod increases escalator durability and reliability.

KEY: APTA ^A / EcoFriendly [Ⓢ]
Standard Equipment [Ⓢ]



KONE 24/7 CONNECTED SERVICES

Smart equipment

Predict problems before they happen.

24/7 monitoring

Elevators and escalators are always on duty—and so are we.

Transparency

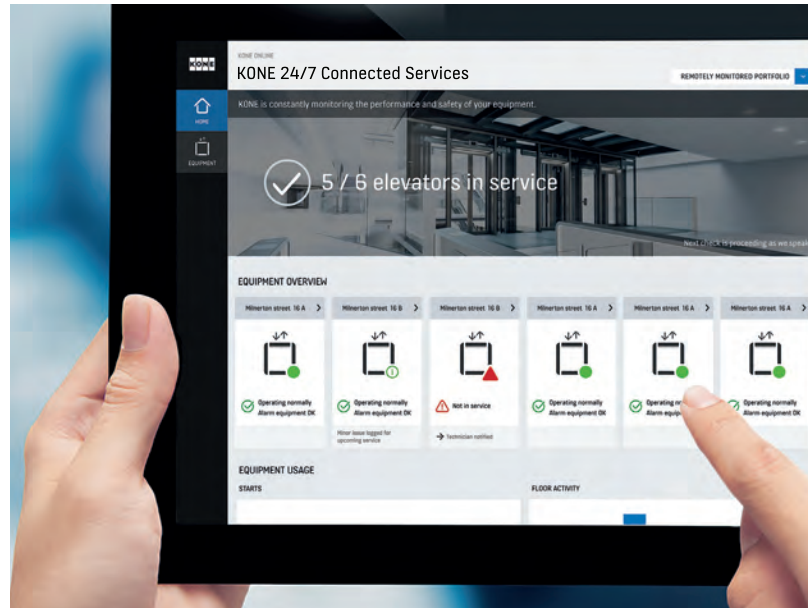
See what your maintenance crew sees.



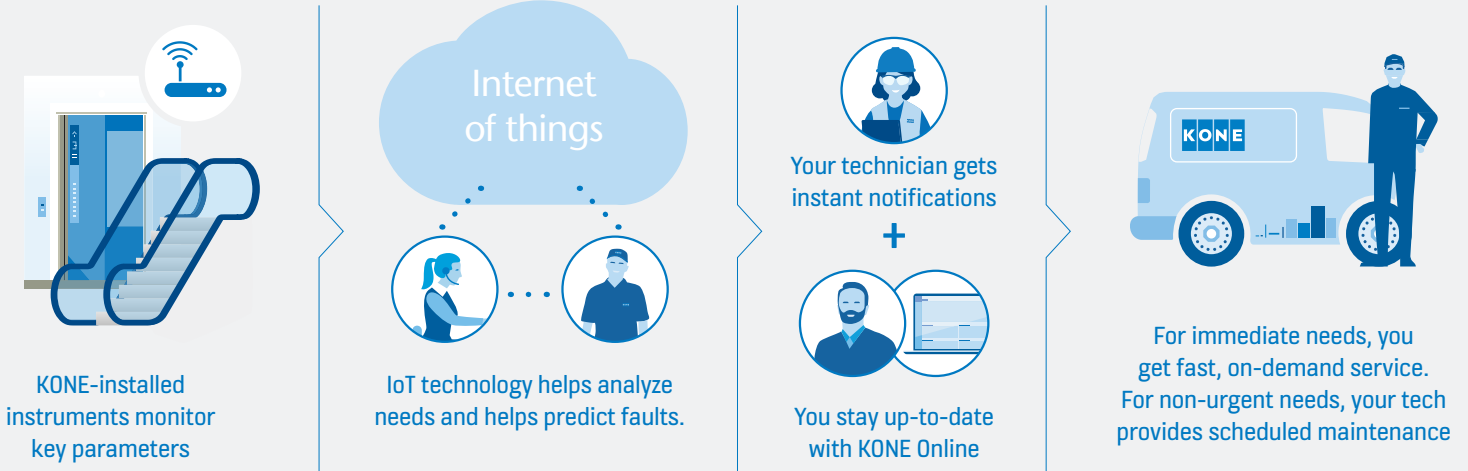
KONE KNOWS YOU DON'T NEED MAINTENANCE SURPRISES

The old “break. fix. repeat.” maintenance model is flawed. You’ve told us you’re frustrated with unexpected breakdowns, time-consuming and costly repairs – and the uncertainty of if and when problems may resurface.

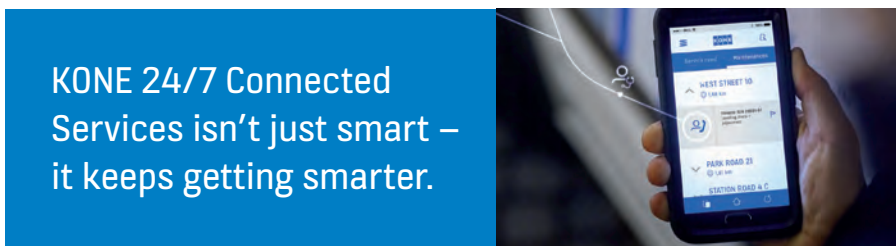
KONE 24/7 Connected Services with IoT connectivity changes all of that. State-of-the-art diagnostic technology and round-the-clock monitoring can help save you time and money by predicting problems before they happen, while an intuitive KONE Online dashboard keeps you up-to-date on the status of your equipment.



How it works



➤ Predictive maintenance means less downtime and fewer breakdowns. ◀



KONE 24/7 Connected Services isn't just smart – it keeps getting smarter.

See how predictive technology can prevent breakdowns before they happen @ [KONE.us/connected](https://www.kone.com/us/connected), or call us at 877-276-8691.